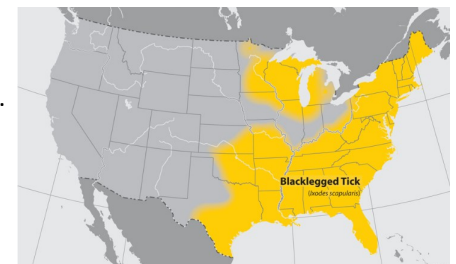


Ixodes scapularis—Blacklegged tick (a.k.a. deer tick)



Bionomics: Common in wooded areas and thick underbrush and could easily attach to soldier as human host and transmit disease.

Medical Importance: Transmits: Lyme disease, *Borrelia miyamotoi* disease, anaplasmosis, babesiosis, ehrlichiosis and Powassan virus disease. A single tick can be co-infected with the etiological agents of the above diseases. The greatest risk of being bitten exists in the spring, summer, and fall. However, adults may be out searching for a host any time winter temperatures are above freezing. Stages most likely to bite humans are nymphs and adult females.



Ixodes scapularis—Blacklegged tick (a.k.a. deer tick)

